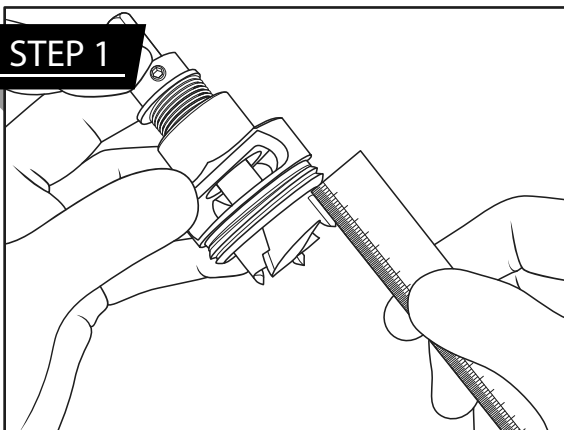




## Simple Step-by-Step Instructions for Using the **HINGE PRO 350X**

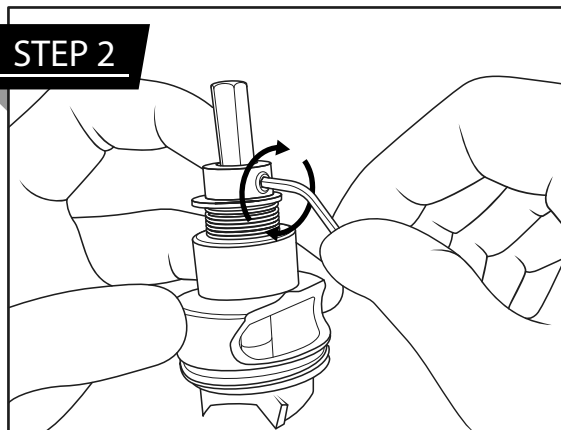
### 35mm or 26mm Hinge Cups

#### STEP 1



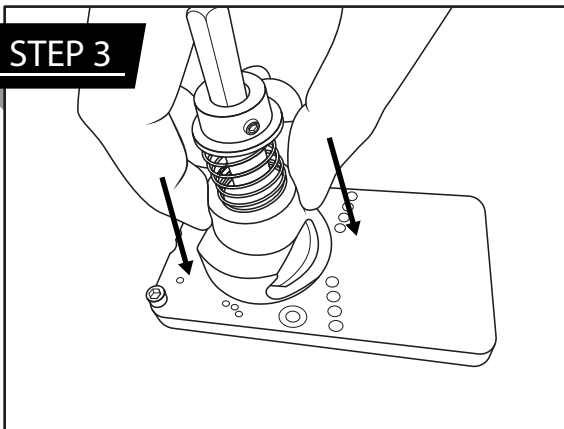
**Assemble the Drill Guide** Insert the Forstner drill bit to the drill guide and loosely add the spring, washer, and locking nut.

#### STEP 2



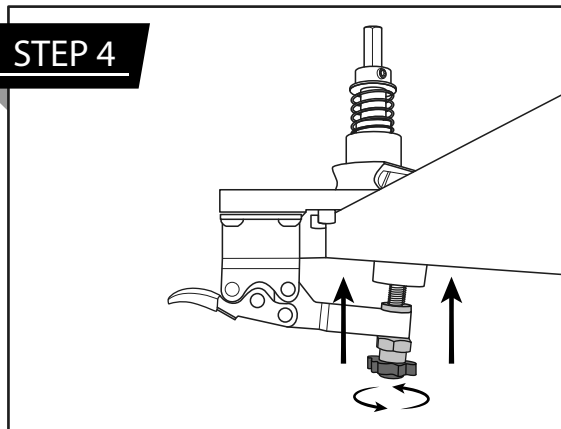
**Set the Depth** Adjust the drill bit depth to match your hinge depth, lock the stop collar in place with the spring compressed.

#### STEP 3



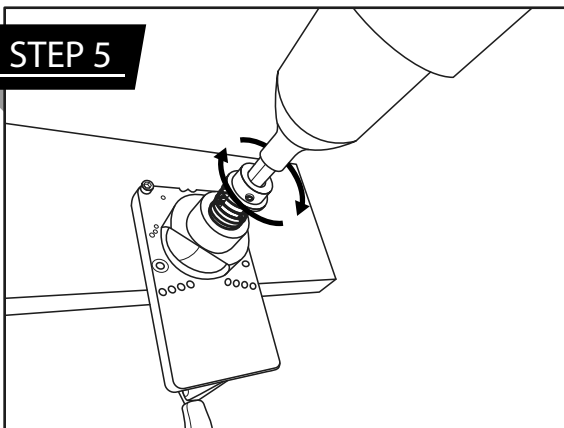
**Insert the Drill Guide** Screw the drill guide into place on the locator plate, ensuring it's tight and aligned.

#### STEP 4



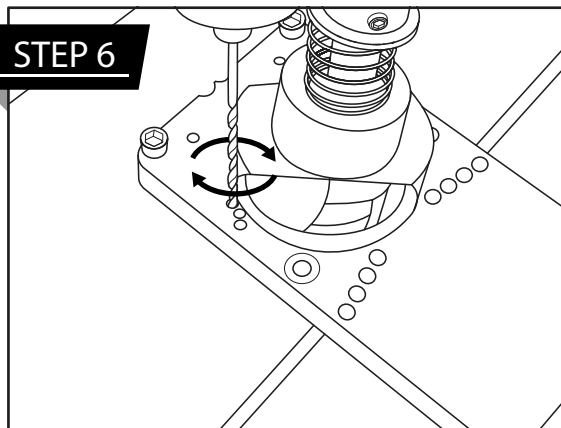
**Adjust Offset & Secure Jig** Set the offset (default 5mm) by moving the knurled nuts. Locate & secure the jig by adjusting the rubber foot.

#### STEP 5

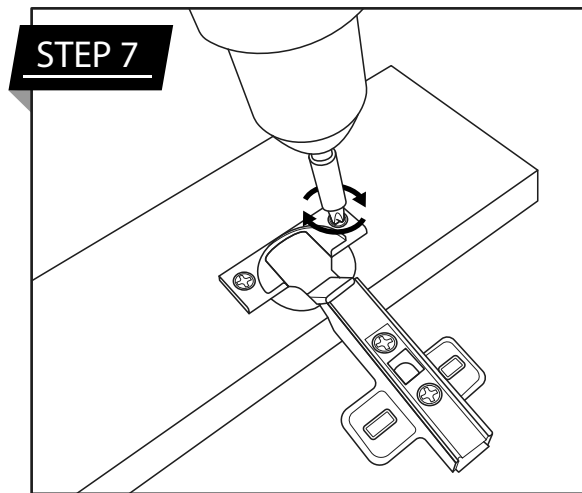


**Drill the Hinge Hole** Drill the hinge cup hole carefully into the material using the Forstner drill bit.

#### STEP 6

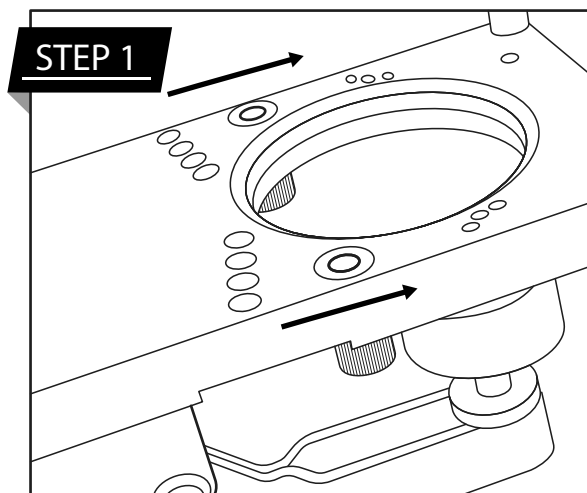


**Drill Screw Holes** Drill the screw holes according to the dimensions of your hinge.

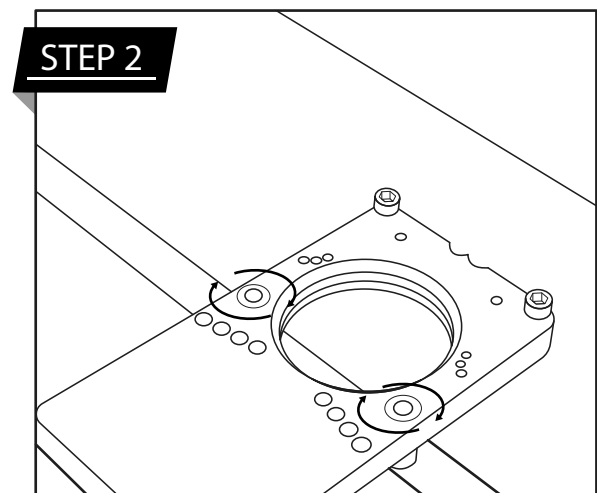


**Install the Hinges** Insert the hinge into the cup and secure with screws, ensuring perfect alignment.

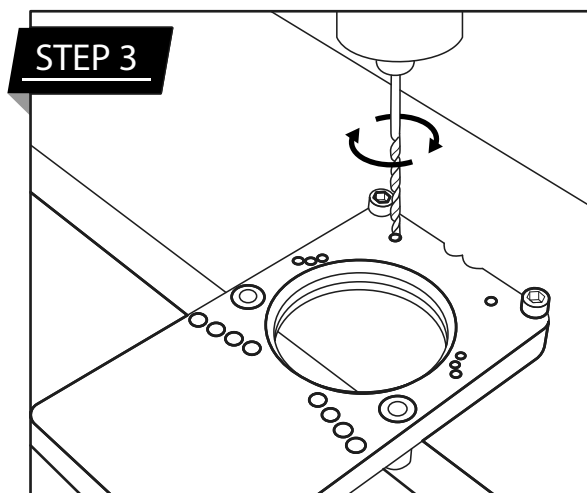
## Mounting Plate Fixing Points



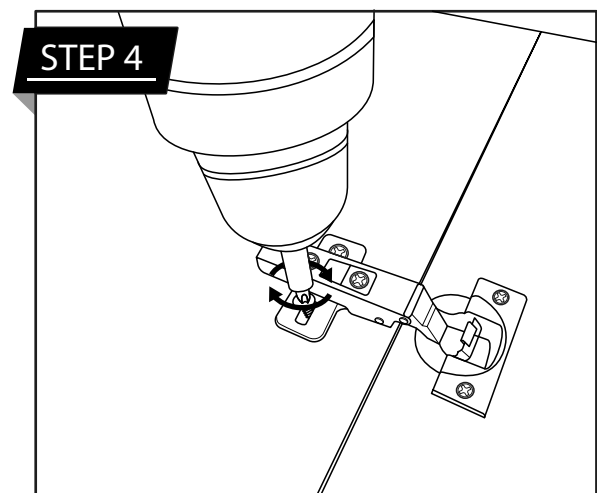
**Set 0 mark** Secure the knurled nuts to the two #20 thread positions (marked as "0").



**Position the Jig** Clamp the hinge jig tight against the material edge for accurate alignment.



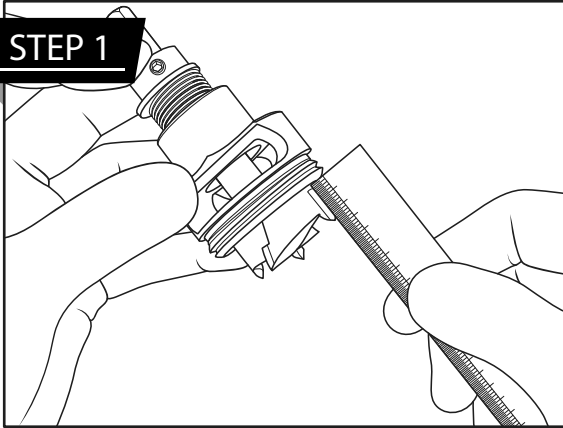
**Drill the Screw Holes** Drill two screw holes, 37mm from the material edge & spaced 32mm apart.



**Install the hinge** Position the hinge mounting plate and secure with screws, ensuring perfect alignment.

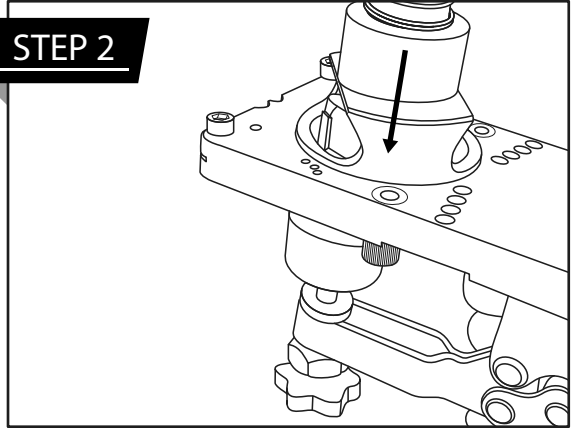
## 20mm Cam Lock Brackets

### STEP 1



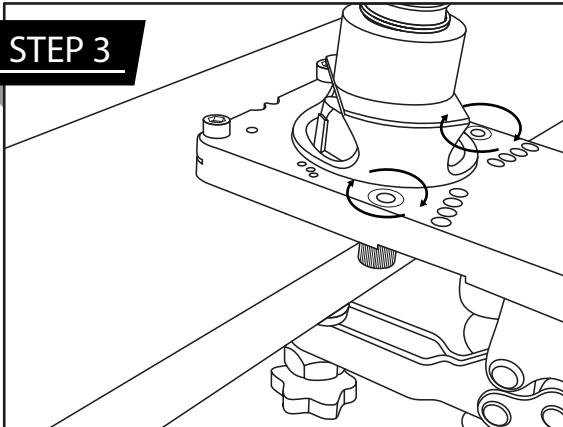
**Insert the Drill Bit** Set up the Forstner bit in the drill as previously shown.

### STEP 2



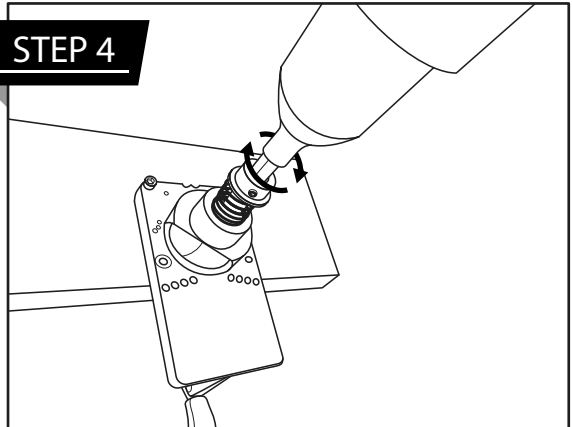
**Setup Offset** Move the bottom knurled nuts into the #20 locator position under the jig.

### STEP 3



**Position the Jig** Place the jig firmly against the edge of your material for proper alignment.

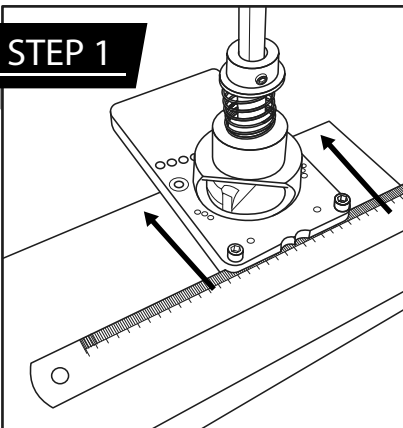
### STEP 4



**Drill the Hole** Drill the hinge hole for the cam lock bracket.

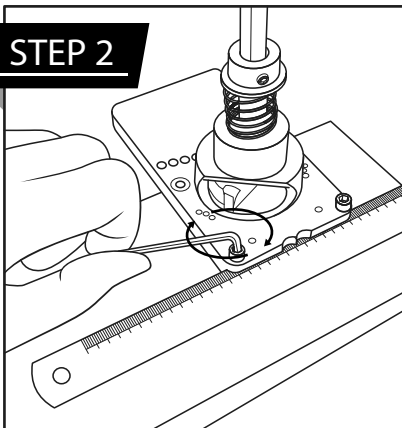
## Offset Ruler Slot

### STEP 1



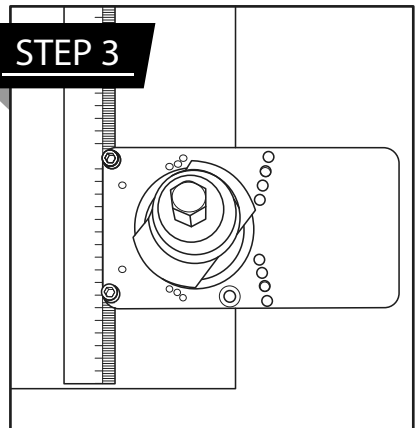
**Assemble the Drill Guide** Insert the Forstner drill bit to the drill guide and loosely add the spring, washer, and locking nut.

### STEP 2



**Assemble the Drill Guide** Insert the Forstner drill bit to the drill guide and loosely add the spring, washer, and locking nut.

### STEP 3



**Drill Consistent Holes** Drill hinge holes in consistent locations, using the ruler as a reference.